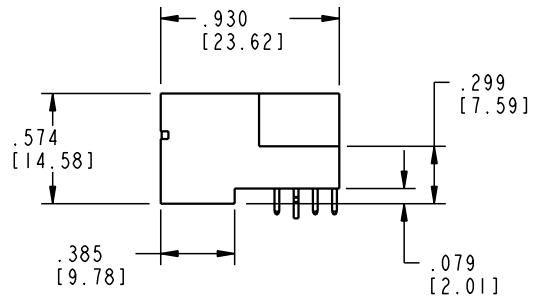
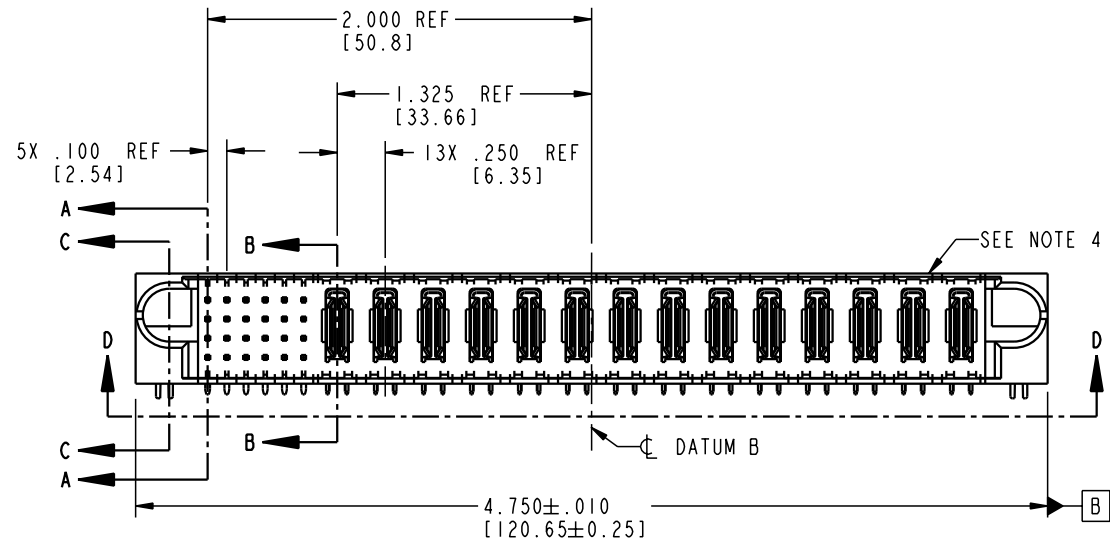
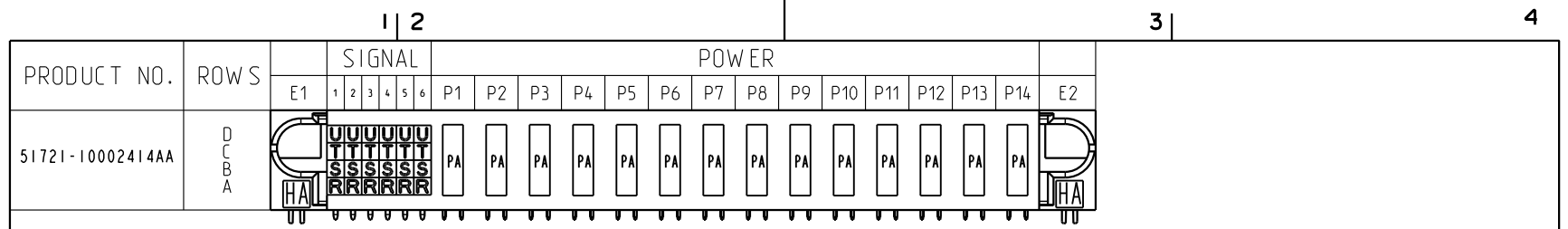


Tous droits strictement réservés. Reproduction ou communication o des liens interdite sous quelque forme que ce soit sans autorisation écrite du propriétaire. Propriete de c FCI. Droits de reproduction FCI.



All rights strictly reserved. Reproduction or issue to third parties in any form whenever is not permitted without written authority from the proprietor. Property of FCI. Copyright FCI.



CODE	DIM "M" MATING LENGTH	CONTACT TYPE
R	.270 [6.86]	SIGNAL
S	.270 [6.86]	SIGNAL
T	.270 [6.86]	SIGNAL
U	.270 [6.86]	SIGNAL
PA	N/A [N/A]	POWER
HA	N/A [N/A]	HOLD-DOWN

mat'l code				SEE NOTE 2		tolerances unless otherwise specified		CUSTOMER	
ltr	ecm no.	dr	date	linear	.XX ± .01/0.X ± 0.3		COPY		
A	V20300	JWS	02-07-02		.XXX ± .005/0.XX ± 0.13		projection		
					.XXX ± .0020/0.XX ± 0.051		INCH/MM		
				angles	0° ± 2°		scale		
				dr	J. SHAFFER	02-07-02	1:1		
				engr	J. SWAIN	02-07-02			
				chr	J. SWAIN	02-07-02			
				appd	J. SWAIN	02-07-02			
sheet index	revision sheet	A	A	A	A				
		1	2	3	4				

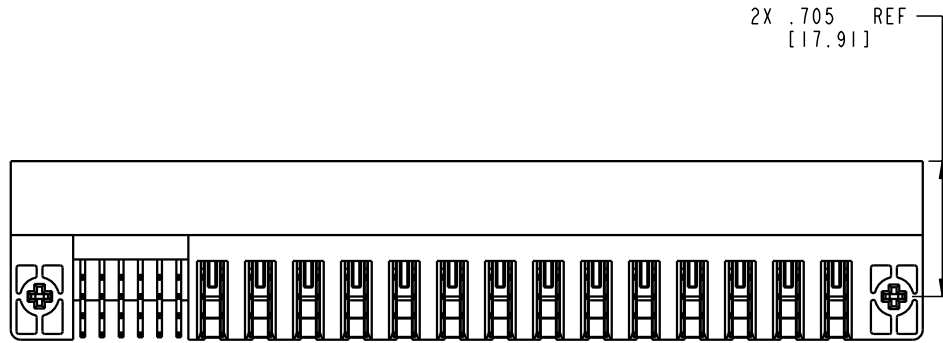
FCI ELECTRONICS		www.fciconnect.com	
title		24S + 14P	
product family		PwrBlade	
size		dwg no	
A		51721-10002414AA	
code		213	
sheet		1 of 4	

Tous droits strictement réservés. Reproduction ou communication o des liers interdite sous quelque forme que ce soit sans autorisation écrite du propriétaire. Propriete de c FCI. Droits de reproduction FCI.

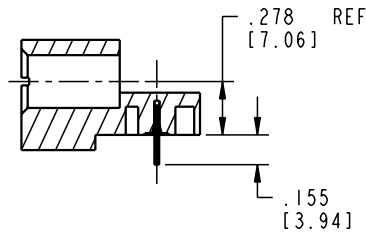


All rights strictly reserved. Reproduction or issue to third parties in any form whatever is not permitted without written authority from the proprietor. Property of FCI. Copyright FCI.

PRODUCT NUMBER
51721-10002414AA

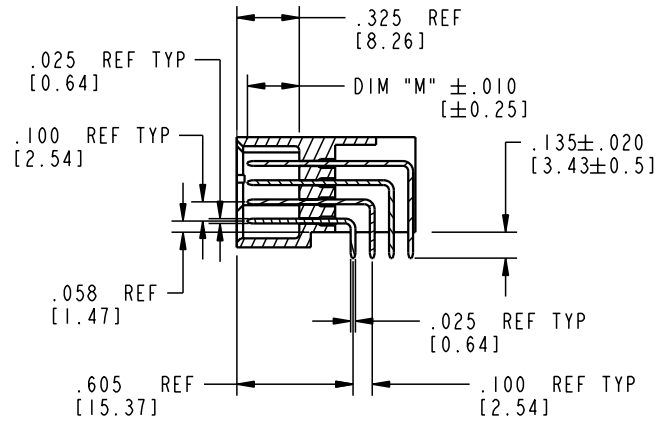


VIEW D-D

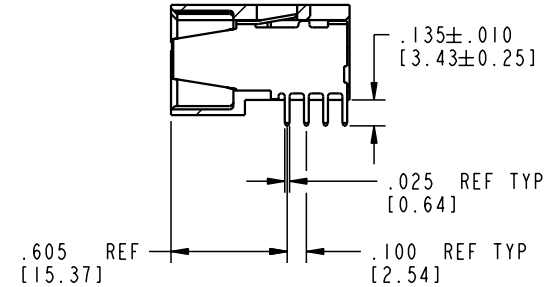


SECTION C-C

3 | 4



SECTION A-A



SECTION B-B

mat'l code				SEE NOTE 2		tolerances unless otherwise specified		CUSTOMER		ELECTRONICS www.fciconnect.com	
ltr	ecn no.	dr	date	linear	.XX±.01/0.X±0.3		COPY		 INCH/MM scale 1:1	title	
A					.XXX±.005/0.XX±0.13		projection			24S + 14P	
					.XXX±.0020/0.XXX±0.051					RIGHT ANGLE SOLDER HEADER	
				angles	0° ± 2°				product family		
				dr	J. SHAFFER	02-07-02			PwrBlade		code
				enr	J. SWAIN	02-07-02			size		213
				chr	J. SWAIN	02-07-02			A		sheet
				appd	J. SWAIN	02-07-02			51721-10002414AA		2 of 4
sheet index		revision sheet									

1 | 2

Pro/E

3 |

cage code 22526

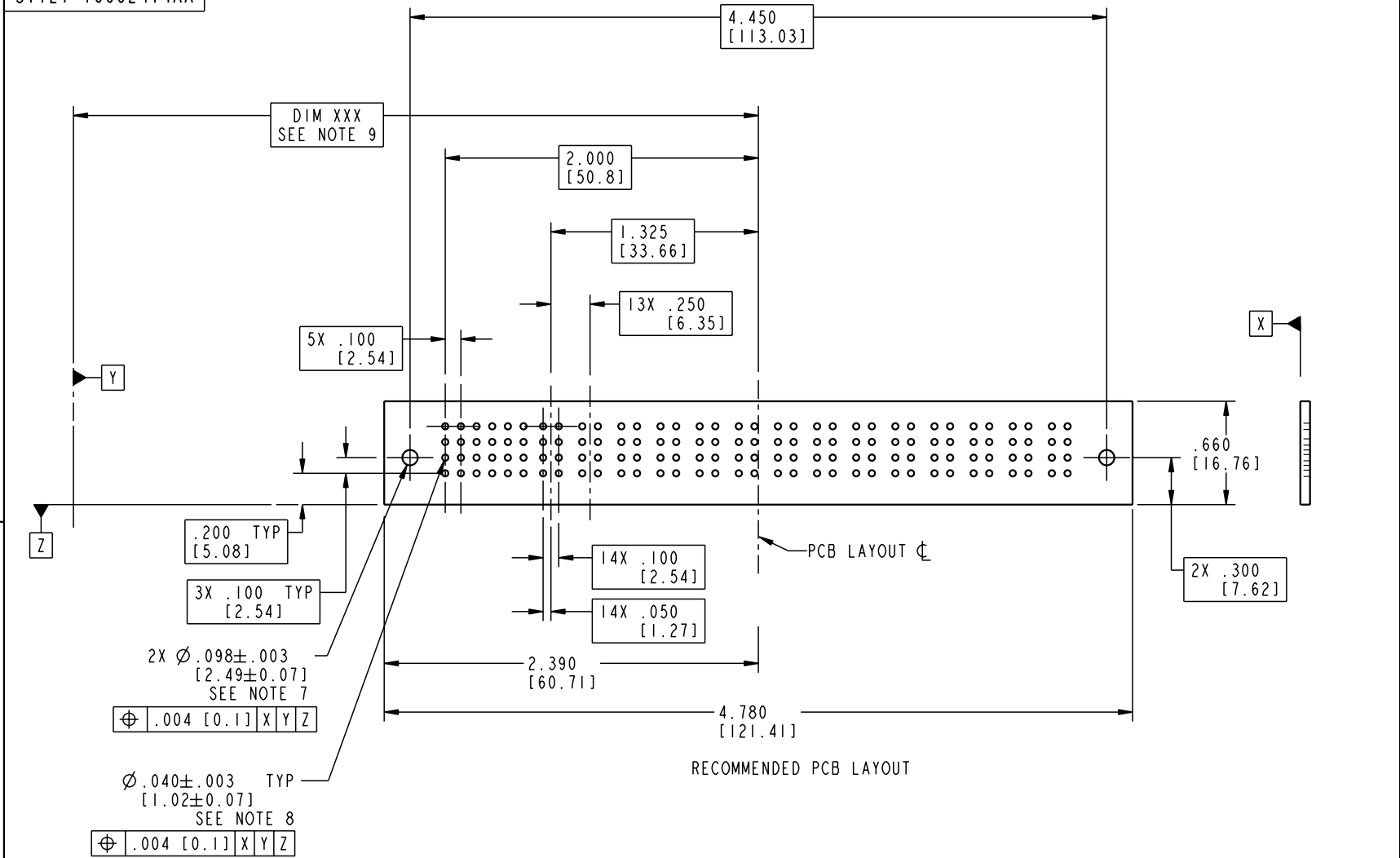
4

Tous droits strictement réservés. Reproduction ou communication o des tiers interdite sous quelque forme que ce soit sans autorisation écrite du propriétaire. Propriété de c FCI. Droits de reproduction FCI.

All rights strictly reserved. Reproduction or issue to third parties in any form, whenever is not permitted without written authority from the proprietor. Property of FCI. Copyright FCI.



PRODUCT NUMBER
51721-10002414AA



.200 TYP [5.08]
3X .100 TYP [2.54]
2X $\varnothing .098 \pm .003$ [2.49 ± 0.07] SEE NOTE 7
 $\varnothing .004$ [0.1] | X | Y | Z
 $\varnothing .040 \pm .003$ TYP [1.02 ± 0.07] SEE NOTE 8
 $\varnothing .004$ [0.1] | X | Y | Z

mat'l code SEE NOTE 2				tolerances unless otherwise specified		CUSTOMER		ELECTRONICS www.fciconnect.com	
ltr	ecn no.	dr	date	linear	.XX ± .01 / 0.X ± 0.3	COPY		title 24S + 14P	
A				projection	.XXX ± .005 / 0.XX ± 0.13			RIGHT ANGLE SOLDER HEADER	
				angles	.XXX ± .0020 / 0.XX ± 0.051	INCH/MM		product family PwrBlade code 213	
		dr	J. SHAFFER 02-07-02	scale	0° ± 7°	A		size 51721-10002414AA sheet 3 of 4	
		enr	J. SWAIN 02-07-02						
		chr	J. SWAIN 02-07-02						
		appd	J. SWAIN 02-07-02						
sheet index	revision sheet								

Pro/E

cage code 22526

PDM: Rev:A

STATUS: Released

Printed: Aug 12, 2007

Tous droits strictement réservés. Reproduction ou communication o des tiers interdite sous quelque forme que ce soit sans autorisation écrite du propriétaire. Propriété de c FCI. Droits de reproduction FCI.



All rights strictly reserved. Reproduction or issue to third parties in any form, whatever is not permitted without written authority from the proprietor. Property of FCI. Copyright FCI.

PRODUCT NUMBER
51721-10002414AA

NOTES:

1. DIMENSIONS AND TOLERANCES ARE IN ACCORDANCE WITH ASME Y14.5M, 1994 UNLESS OTHERWISE SPECIFIED.

CONNECTORS NOTES:

② HOUSING MATERIAL: UL 94 V-0 GLASS FILLED HIGH TEMP THERMO PLASTIC
POWER CONTACT MATERIAL: COPPER ALLOY
SIGNAL PIN MATERIAL: COPPER ALLOY

3. PLATING:

SIGNAL PINS: 30u"/0.76um Au OVER 50u"/1.27um Ni
POWER CONTACTS: 50u"/1.27um Ni UNDER ALL WITH 30u"/0.76um Au ON CONTACT AREA AND SnPb ON PCB INTERFACE

④ "MANUFACTURER" NAME, P/N, AND DATE CODE TO APPEAR ON THIS SURFACE.

5. PRODUCT SPECIFICATION GS-12-149.

PCB - NOTES:

6. ALL HOLE DIAMETERS ARE FINISHED HOLE SIZE.

⑦ HOLD DOWN THROUGH HOLES ARE UNPLATED.

⑧ $\varnothing .0453 \pm 0.0010$ [1.151 \pm 0.025] DRILLED HOLES PLATED WITH 0.0003 [0.008] MIN SnPb OVER .001 [0.03] TO .003 [0.08] Cu PLATING TO ACHIEVE $\varnothing .040 \pm .003$ [1.02 \pm .07] HOLE.

⑨ "DIM XXX" TO BE DETERMINED BY THE CUSTOMER.

mat'l code				SEE NOTE 2		tolerances unless otherwise specified		CUSTOMER		ELECTRONICS www.fciconnect.com	
ltr	ecr no.	dr	date	linear	.XX±.01/0.X±0.3		COPY			title	
A					.XXX±.005/0.XX±0.13		INCH/MM			24S + 14P	
					.XXX±.0020/0.XX±0.051		scale			RIGHT ANGLE SOLDER HEADER	
				angles	$0^{\circ} \pm \theta^{\circ}$		product family		PwrBlade		
				dr	J. SHAFFER	02-07-02	size		dwg no		
				enr	J. SWAIN	02-07-02	A		51721-10002414AA		
				chr	J. SWAIN	02-07-02	sheet		213		
				appd	J. SWAIN	02-07-02	4 of 4		4 of 4		
sheet index		revision sheet									

1 | 2

Pro/E

3 |

cage code 22526

4